



# Testing & Leak Detection

<b>Overview Testing Pumps</b>	<b>174</b>
<b>Testing of Water Lines &amp; Containers</b>	
Testing Pumps	175 - 177
<b>Testing of Gas &amp; Water Lines</b>	
Analogue Testing Device	178 - 179
Digital Testing Device	180 - 181
<b>Testing of Waste Water Lines</b>	
Leakage Testing in Accordance with DIN EN 1610	182
<b>Leak Detection on Gas Lines</b>	
Leak Detection Spray	183
Leak Detection Unit	183



# Testing & Leak Detection

## Overview Testing Pumps

up to 60 bar

### RP 50-S / RP 50-S INOX

Manual precision testing pump, 0 - 60 bar

- A classic, precise and safe
- Scaling pressure gauge 1 bar
- Scaling pressure gauge 0.1 bar expandable up to a maximum pressure of 16 bar
- Container: Steel Duramant® coated or stainless steel
- Volume: 12 l
- Weight: 8 kg

175



5

up to 40 bar

### RP PRO III

Self-priming electrical testing pump, 0 - 40 bar

- Saves time and effort, automatic filling and testing
- Scaling pressure gauge 1 bar
- Liquid supply self-priming or using a pressure source
- Weight: 16 kg

176



up to 30 bar

### RP 30

Manual testing pump, 0 - 30 bar

- Simple, light and handy, for all common uses in residential construction
- Scaling pressure gauge 1 bar
- Container: ABS-plastic
- Volume: 4.5 l
- Weight: 4.5 kg

177



up to 25 bar

### TP 25

Manual testing pump, 0 - 25 bar

- Small and robust, for daily use at the building site
- Scaling pressure gauge 1 bar
- Container: Steel Duramant® coated
- Volume: 7 l
- Weight: 4,6 kg

177



### RP 50-S / RP 50-S INOX

Robust precision testing pump for the pressure testing of water lines and containers up to 60 bar with very high testing standards

Adjustment of the pressure gauge to 0,1 bar is possible!



#### Product Profile

##### APPLICATION AREA

Pressure testing with water or oil of piping in residential and industrial construction, as well as for industrial containers (up to 60 bar). Expansion possible with an extra fine scaling pressure gauge (0.1 bar) for testing up to 16 bars

##### KEY FEATURES

- A drag indicator displays the preset pressure so that a loss of pressure in the system can be detected easier
- Reliable and precise testing results: the dual-valve system (Twin Valve) enables self-testing of the pump, as well as a precise fine adjustment of the pressure
- Especially precise reading as needed: finely scaled (scaling 0.1 bar) pressure gauge available separately
- Testing hose with steel mesh prevents reading mistakes, that can happen when the hose expands during operation
- Type 50-S: Weather and cold-resistant steel container with DURAMANT coating
- Type 50-S INOX: high-quality corrosion resistant stainless steel tank

##### TECHNICAL DATA

**Testing and pressure range:** 0 - 60 bar, with 1 bar steps  
0 - 860 psi, with 20 psi steps  
0 - 6 MPa, with 0,1 MPa steps

**Hub suction capacity:** approx. 45 ml / stroke

**Tank capacity:** 12 l

**Dimensions (L x W x H):** 720 x 170 x 260 mm

**Connection:** R 1/2"

**Container RP 50-S:** Steel, DURAMANT® coated

**Container RP 50-S INOX:** Stainless steel

##### Warp-resistant and lockable lever

Ergonomic handle serves as carrying grip too

##### Additional pressure gauge with fine scaling 0.1 bar optional

Enables very precise readings up to a range of 16 bar (No. 61316)

##### Testing hose with steel mesh

Precise measurement

##### Weather and cold-resistant container

5 year rust-free guarantee - DURAMANT® coated

**INOX!**



No. 60203



No. 60200

Double valve system: enables self-testing of the pump, as well as a precise fine adjustment of the pressure

Optional: Extra fine scaling Pressure gauge for the testing of systems up to 16 bar with a 0.1 scaling



Model	kg	g	No.
RP 50-S Testing Pump	8	1 4	<b>60200</b>
RP 50-S INOX (stainless steel) Testing Pump	8	1 4	<b>60203</b>

#### ACCESSORIES

Model	g	No.	Model	g	No.
Maintenance package	0.1	1	High pressure hose with 1/4" - 1/2" connection	490	1 <b>61125</b>
Double nipple 1/2" to 3/4"	0,1	1	Extra 16 bar pressure gauge with drag indicator R1/4" 100	1	<b>61316</b>



# Testing & Leak Detection

## Testing of Water Lines & Containers

### RP PRO III

Self-priming electric filling and testing pump up to 40 bar

#### Product Profile

##### APPLICATION AREA

Electrical testing pump for the automatic pressure testing of piping and containers up to 40 bar in accordance with national and international standards

##### KEY FEATURES

- Comfortable, automatic filling and pressure testing of piping and containers
- Compact and robust plastic casing for simple handling at the building site
- Liquid supply freely selectable: optional self-priming or from a pressure source. Suitable for water and oil
- Testing hose with steel mesh prevents reading mistakes, that can happen when the hose expands during operation
- Glycerine cushioned pressure gauge absorbs pressure surges which makes pressure reading easier

##### TECHNICAL DATA

<b>Testing and pressure range:</b>	0 - 40 bar, with 1 bar steps 0 - 570 psi, with 20 psi steps 0 - 0.1 MPa steps
<b>Flow Rate:</b>	6 l / min
<b>Dimensions (L x W x H):</b>	375 x 290 x 300 mm
<b>Connection:</b>	R 1/2"
<b>Mains voltage:</b>	200 - 240 V / 50 HZ and 110 V / 50 - 60 HZ
<b>Performance:</b>	1.3 kW
<b>Container:</b>	ABS-plastic

5



#### Valve for pressure adjustment

Precise labelling on handle

#### Glycerine pressure gauge

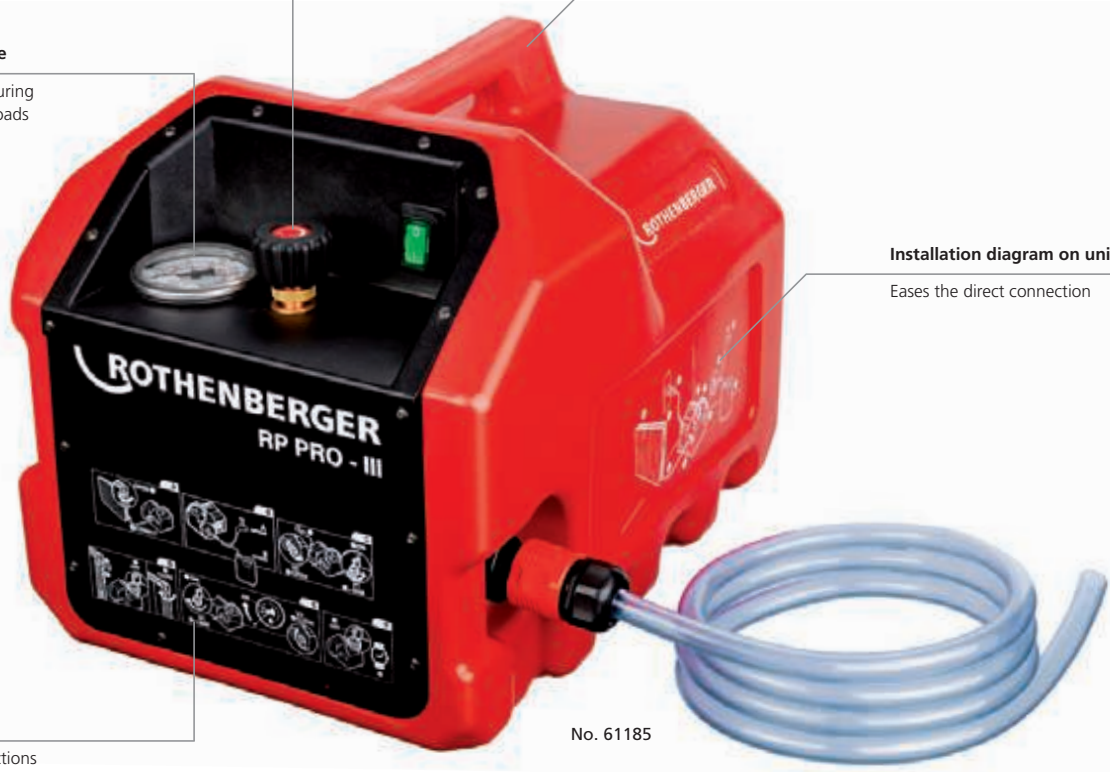
Easy for the user to read during high dynamic alternating loads

#### Optimal weight distribution

Comfortable to carry

#### Installation diagram on unit

Eases the direct connection



No. 61185

#### Function Overview

Direct overview of the functions

Optional: Extra fine scaling Pressure gauge for the testing of systems up to 16 bar with a 0.1 scaling



Model	kg	No.
Testing pump RP PRO III self-priming with power cable, high-pressure hose and 1/2" connection, filling hose	16.0	<b>61185</b>
Filling hose with adaptor	0.5	<b>61001</b>
Testing hose with R 1/2" connection	0.4	<b>61002</b>
Extra pressure gauge	0.8	<b>61187</b>
Maintenance package RP PRO III in scope of delivery		<b>61186</b>



### TP 25

Small, robust precision testing pump for pressure testing up to 25 bar

#### Product Profile

#### APPLICATION AREA

Pressure testing with water or oil of piping in residential and industrial construction, as well as for industrial containers up to 25 bar in accordance with international and national standards

#### KEY FEATURES

- Reliable and precise testing results: the dual-valve system (Twin Valve) enables self-testing of the pump, as well as a precise fine adjustment of the pressure
- Testing hose with steel mesh prevents reading mistakes, that can happen when the hose expands during operation
- Weather and cold-resistant steel container with DURAMANT® coating

#### TECHNICAL DATA

<b>Testing and pressure range:</b>	0 - 25 bar
<b>Hub suction capacity:</b>	approx. 16 ml / stroke
<b>Dimensions (L x W x H):</b>	380 x 215 x 156 mm
<b>Connection:</b>	R 1/2"
<b>Container:</b>	Steel, DURAMANT® coated (5 year guarantee)



For the daily work on site



Model	Pressure range	kg	1	4	No.
TP 25 Testing Pump	up to 25 bar	4.6	1	4	<b>60250</b>
Maintenance package TP 25			1		<b>60251</b>

### RP 30

Simple and light testing pump for compression testing up to 30 bar

#### Product Profile

#### APPLICATION AREA

Pressure testing with water or oil of piping in residential and industrial construction, as well as for industrial containers up to 30 bar in accordance with international and national standards

#### KEY FEATURES

- Testing hose with steel mesh prevents reading mistakes, that can happen when the hose expands during operation
- Shock and corrosion resistant ABS plastic container with reinforced floor

#### TECHNICAL DATA

<b>Testing and pressure range:</b>	0 - 30 bar, with 1-bar steps 0 - 440 psi, with 20 PSI steps
<b>Hub suction capacity:</b>	16 ml / stroke
<b>Dimensions (L x W x H):</b>	440 x 200 x 240 mm
<b>Connection:</b>	R 1/2"
<b>Container:</b>	ABS-plastic



Easy, light and handy: for all common house building applications



Model	Pressure range	kg	1	4	No.
Testing pump RP 30	up to 30 bar	4.5	1	4	<b>61130</b>
Testing hose		0.4	1		<b>61125</b>

# Testing & Leak Detection

## Testing of Gas & Water Lines

### ROTEST® GW 150/4

Analogue testing device for gas and water connections using air as the medium



#### Product Profile

##### APPLICATION AREA

Analogue testing unit for the implementation of the following tests:

**Gas:** Load and leakage test for newly installed gas lines in accordance with DVGW - TRGI worksheet G600 (April 2008)

Leakage test from propane liquid gas lines / low-pressure liquid gas lines

Adjustment of the duct pressure on atmospheric burners and forced-air burners

Testing of the appliance connection pressure on gas appliances

**Water:** Pre-testing and testing of newly installed drinking water lines in accordance with DIN 1988 (TRWI)

##### KEY FEATURES

- Quick and precise pressure reading over water column without electronic
- Testing time and pressures in accordance with DVGW - TRGI and TRWI clearly arranged on unit cover
- Sturdy unit: High reliability when used on the building site

##### TECHNICAL DATA

**Pressure gauge:** 4 bar  
**Water column:** 150 mbar  
**Testing accuracy:** Water column 0.1 mbar (Reading accuracy in accordance with TRGI)  
 Pressure gauge 0.1 bar (Display range 0 - 4 bar)

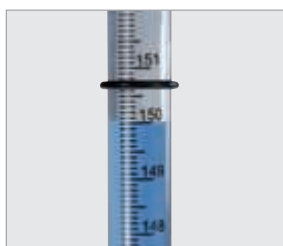
5



**DVGW-TRGI / worksheet G600/April 2008 conforming!**



Testing scale up to 150 mbar on transparent extending tube element



Transparent tube element with double o-ring seal



Inspection glass  
Water level control

Legible scaling

Continuous scaling up to 150 mbar

Measurement chart in unit

Testing times and testing pressure from lawmakers at a glance

Foam inlay

High transport safety and protection of the components

Compact measuring station

Designed to serve in real-life situations through quick, exact gas pressure measurements

Model in combination with basic unit	kg	No.
with 5 test plugs and supply end cap (with No. 1-14, 16-17)	7.6	<b>61700</b>
with 5 test plugs and supply end cap (with No. 1-5, 7-14, 16-17)	7.3	<b>61701</b>

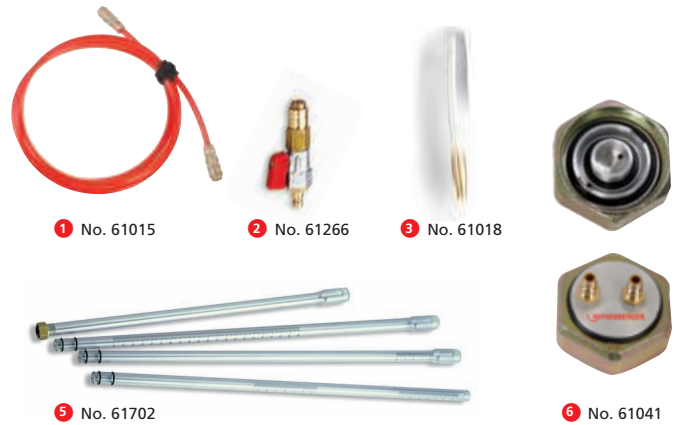
# Testing & Leak Detection

## Testing of Gas & Water lines

### Set Components

Description	ET	g	No.
Connecting hose	1	130	61015
Cut-off valve, gas	2	125	61266
Adaptor	3	10	61018
Rubber bellow	4	55	61014
Tube element, 4 piece	5	120	61702
Supply end cap	6	380	61041
Seal set	7	40	61030
Force pump	8	400	61011
Spare manometer R 1/4"	9	75	61012
Double nipple for hose connection	10	100	H96591
Measurement fluid, blue	11	100	351257

4, 7 up to 11 without picture



### Gas Test Plug / Adaptor

Suitable for gas lines up to 1.5 bar

Model	Steel exterior pipe Ø inch	Copper exterior pipe Ø mm	Parts-No.	g	No.
Conical shape with pneumatic connection					
Size 0	3/8 - 1/2"	12 - 20	12	45	351260
Size 1	1/2 - 1"	20 - 30	13	80	351261
Size 2	3/4 - 1.1/4"	25 - 40	14	125	351262
Size 3	1.1/4 - 2"	35 - 60	15	175	351263

Model	Steel exterior pipe Ø inch	Copper exterior pipe Ø mm	Parts-No.	g	No.
Cylindrical shape with pneumatic connection					
Size 1	3/4"	18 - 22	16	60	351271
Size 2	1"	28 - 30	17	75	351272

Model	Steel exterior pipe Ø inch	Copper exterior pipe Ø mm	Parts-No.	g	No.
Conical shape with hose coupling					
Size 0	3/8 - 1/2"	12 - 20	18	200	351220
Size 1	1/2 - 1"	20 - 30	19	300	351221
Size 2	3/4 - 1.1/4"	25 - 40	20	300	351222
Size 3	1.1/4 - 2"	35 - 60	21	400	351223

Model	Steel exterior pipe Ø inch	Copper exterior pipe Ø mm	Parts-No.	g	No.
Conical shape with 2 ball valves					
Size 1	1/2 - 1"	20 - 30	22	260	351231
Size 2	3/4 - 1.1/4"	25 - 40	23	420	351232
Size 3	1.1/4 - 2"	35 - 60	24	700	351233

Model	Steel exterior pipe Ø inch	Copper exterior pipe Ø mm	Parts-No.	g	No.
Conical shape with 1 ball valve					
Size 0	3/8 - 1/2"	12 - 20	25	200	351225
Size 1	1/2 - 1"	20 - 30	26	350	351226
Size 2	3/4 - 1.1/4"	25 - 40	27	390	351227
Size 3	1.1/4 - 2"	35 - 60		600	351228

Model	Parts-No.	g	No.
With double plug valve - with hose snout			
Adaptor/cut-off valve with pn. connection	28	290	351265



# Testing & Leak Detection

## Testing of Gas & Water Lines

### ROTEST® GW DIGITAL V2.3 USB

Universal, digital leakage testing system for gas, water and sewage lines with automatic logging

DVGW-TRGI / worksheet  
G600/April 2008 conforming!



### Product Profile

#### APPLICATION AREA

Digital testing unit with automatic logging for the implementation of following tests:

- Gas:** Load and leakage test for newly installed gas lines in accordance with DVGW - TRGI Worksheet G600 (April 2008)  
Leakage test from propane liquid gas lines / low-pressure liquid gas lines  
Adjustment of the duct pressure on atmospheric burners and forced-air burners  
Testing of the appliance connection pressure on gas appliances  
Long-term pressure testing
- Water:** Pre-testing and testing of newly installed drinking water lines in accordance with DIN 1988 (TRWI)  
Long-term pressure testing
- Sewage:** Leakage testing on sewage lines (house connection) in accordance with DIN EN 1610 and DIN 1986 part 30 possible in combination with the house connection testing set (see page 182)  
Long-term pressure testing

#### KEY FEATURES

- High safety and simple use, the software in the unit guides the user step-by-step through the tests - in accordance with the legally required testing specifications
- Simple logging of the results with the thermal printer (optional accessory) or with the PC software included in delivery
- Two ports (infra-red and USB) for quick communication with the thermal printer or PC

#### TECHNICAL DATA

##### Low-pressure sensor

Resolution / Testing range: 0.1 mbar / 0 - 250 mbar

##### High-pressure sensor

Resolution / Testing range: 0.001 bar / 0 - 20 bar

##### Continuous long-term testing:

at 0.5 minute intervals max. 3 days

##### Data transfer:

Printer: Infrared

PC: USB

##### Power supply:

Main adaptor, 1 x 9 Volt lithium cell, type SLM 9 V

Robust pressure sensor with a pressure range (250 mbar) blue and (20 bar) red



Ideal for measuring with the House Connection Test Set page 182 up to 250 mbar



# Testing & Leak Detection

## Testing of Gas & Water Lines

### Set components ROTEST® GW DIGITAL V2.3 USB



Set (No. 61298) includes: Individual components 1-20 without thermal printer (No. 61052) and Y-manifold (61282)  
 Set (No.61297) includes: Individual components like No. 61298 without leakage pump (No. 61271), actuator (No.61284) and fine pressure actuator (No. 61282)  
 (Serviceability test not possible)

Model	kg	No.
ROTEST® GW DIGITAL V2.3 USB with leakage pump	5.4	<b>61298</b>
ROTEST® GW DIGITAL V2.3 USB without leakage pump	4.3	<b>61297</b>

Model	ET	g	No.	Model	ET	g	No.
ROTEST® GW DIGITAL V2.3 USB basic unit	1	270	<b>61293</b>	Adaptor water	12	160	<b>61264</b>
Power supply	2	120	<b>61094</b>	Cut-off valve gas	13	155	<b>61266</b>
Low-pressure sensor V2.3 USB	3	40	<b>61276</b>	Cut-off valve for water	14	165	<b>61267</b>
High-pressure sensor V2.3 USB	4	40	<b>61277</b>	Adaptor 1/2"	15	50	<b>61265</b>
Leakage pump	5	780	<b>61271</b>	Adaptor 1/8"	16	10	<b>61270</b>
PC Cable USB	6	105	<b>61294</b>	Adaptor for burner setting	17	20	<b>61274</b>
PC Software RoData 2.4 USB	7	20	<b>92655</b>	Fine pressure regulator	18	50	<b>61284</b>
Thermal printer	8	505	<b>61052</b>	Y-manifold	19	415	<b>61282</b>
Hand pump	9	200	<b>61268</b>	Connecting hose	20	195	<b>61269</b>
Double bellows	10	115	<b>61273</b>	Padded carrying case		1550	<b>61279</b>
Adaptor for gas	11	190	<b>61263</b>				

### ACCESSORIES

Model	g	No.	Model	g	No.
Paper roll for thermal printer (4 rolls)	40	<b>61043</b>	Gas test plugs, size 0, conical 3/8 - 1/2"	45	<b>351273</b>
House connection test set (DIN EN 1610)		<b>61340</b>	Gas test plugs, size 1, conical 1/2 - 1"	80	<b>351274</b>
			Gas test plugs, size 2, conical 3/4 - 1 1/4"	125	<b>351275</b>
			Gas test plugs, size 3, conical 1 1/4 - 2"	175	<b>351276</b>
			Gas test plugs, size 1, cylindrical 3/4"	60	<b>351277</b>
			Gas test plugs, size 2, cylindrical 1"	75	<b>351278</b>
			Supply end cap	380	<b>351279</b>

House connection test set (DIN EN 1610) see 182



# Testing & Leak Detection

## Testing of Waste Water Lines

### House Connection Test Set

Set for testing in accordance with DIN EN 1610 and 1986 in combination with GW Digital (version 2.1 or newer)



#### Product Profile

##### APPLICATION AREA

Testing balloon and accessories for the leakage testing of ground water piping using air in accordance with **DIN EN 1610 and DIN 1986, part 30**. Suitable for nominal diameters of 65 to 250 mm

##### KEY FEATURES

- Handy set: One testing and sealing balloon for the most common pipe diameters (included in set are diameters 75 - 150 mm, additional balloons available in accessories)
- Easier positioning of the balloon, even in hard to reach places using various push and filling rod sizes
- Body material is made out of aluminium and eases the positioning of the testing balloon through the pipe system
- Sturdy balloons made of natural rubber are temperature, use and waste water resistant. If the balloon becomes damaged, a simple repair is possible

##### TECHNICAL DATA

Maximum operating pressure: 15 bar  
Push rod length: 10 m

##### DIN EN 1610

**1.5 million km underground piping alone in Germany are waiting for testing** (Source: DWA)

A new field for certified HVAC craftsmen: The DIN EN 1610 requires leakage testing with water or air for all ground pipe no later than 2015 (varies per region)

5



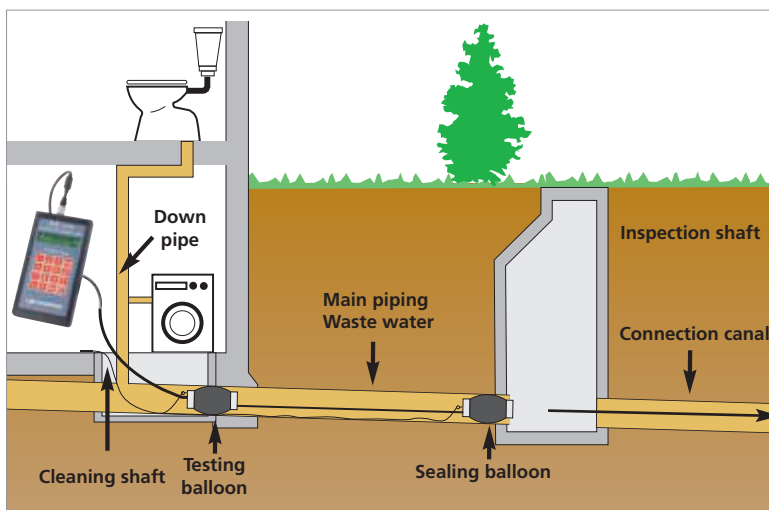
No. 61340

**Do you want to become certified? Just ask us!**

House connection sets in use



Connection example: House connection test set with ROTEST® GW Digital V2.3 USB



11-part House Connection Test Set (No. 61340) includes:

sealing balloon NW 75-150 (No. 61352), testing balloon NW 75-150 (No. 61359), filling hose (No. 61365), test valve, filling valve (No. 61367), push rod (No. 61380), holding rope (No. 61368), upright pump with pressure gauge (No. 61369), plastic case (No. 61370), cover (No. 91123), plastic case inlay for upright pump (No. 91122)

Model	kg	☐	No.
House Connection Test	7.8	1	<b>61340</b>

Ø Testing/Sealing balloon	Testing balloon No.	Sealing balloon No.
65 - 100	<b>61358</b>	-
75 - 150	<b>61359</b>	<b>61352</b>
90 - 250	<b>61360</b>	<b>61353</b>

# Testing & Leak Detection

## Leak Detection on Gas Lines

### ROTEST®

Leak detection on gas lines

#### Product Profile

##### APPLICATION AREA

Ideal for detecting leaks in gas-filled lines, gas cylinders or containers. When a leak is present a blister forms

##### KEY FEATURES

- Simple use - always ready to use
- Highly sensitive foaming spray for a quick and reliable locating of leaks

##### TECHNICAL DATA

Detects gases (for example natural gas, inflammable gas, air)  
The leak detection spray is neutral against the most common inflammable gases and refrigerants. The only reaction is the building of foam

Model	Contents	g		No.
ROTEST® leak detection spray	400 ml	470	12	65000

Highly sensitive foam spray:  
Quick and reliable location of leaks!



DVGW tested  
Reg.-Nr. NG-5170CL0063



5



### ROTEST® Electronic 3

Leak detection on gas lines

#### Product Profile

##### APPLICATION AREA

For the detection of gas in room, as well as leaks in pipes. Detects all flammable methane based gases

##### KEY FEATURES

- Leaks are optically as well as acoustically displayed
- With the help of the 42 cm long, flexible testing head and the integrated lamp, even dark and hard to reach places can be tested
- Quick and precise leak location of even the smallest leak source: The sensitivity of the unit can be adjusted continuously in a range from < 50 ppm - 1 Vol %
- Shock-proof soft case jacket and simple one-handed operation of the unit for use on the building site
- Optical display of battery status

##### TECHNICAL DATA

**Detects:** Natural gas, propane, butane, methane, acetone, alcohol, ammonia, benzyl, ethylene, gasoline, hydrogen, industrial solvents, jet fuel, paint thinner, naphtha, toluene

**Sensitivity:** < 50 ppm – 1 Vol % (Methan)

**Power supply:** 1 x 9 Volt block battery, type SLM 9 V



Finds leaks easily



Set (No. 66080) includes:  
ROTEST® Electronic 3, 9 V battery, plastic carrying case (No. 66085)

Model	kg	No.
ROTEST® Electronic 3	1.5	66080